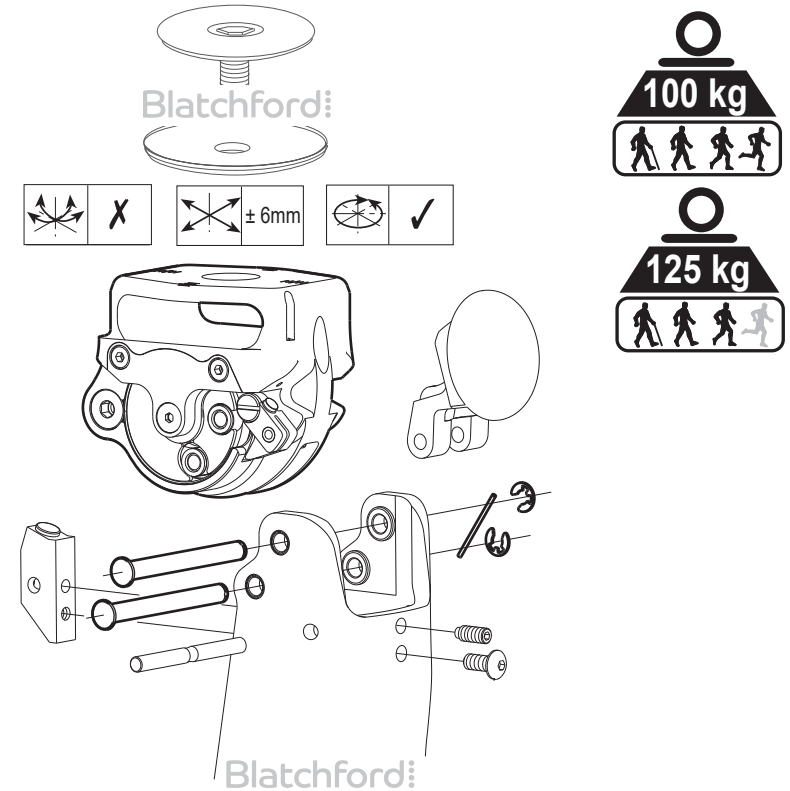


Blatchford:

Blatchford:

Manual Knee Lock ESK+ 239440B with Single Bolt Alignment



Blatchford:

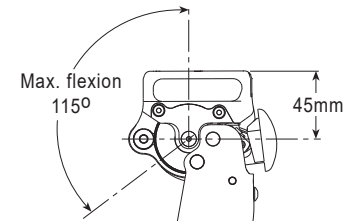
Blatchford Products Limited

Unit D Antura, Kingsland Business Park,
Basingstoke, RG24 8PZ, UNITED KINGDOM

Tel: +44 (0) 1256 316600, Fax: +44 (0) 1256 316710

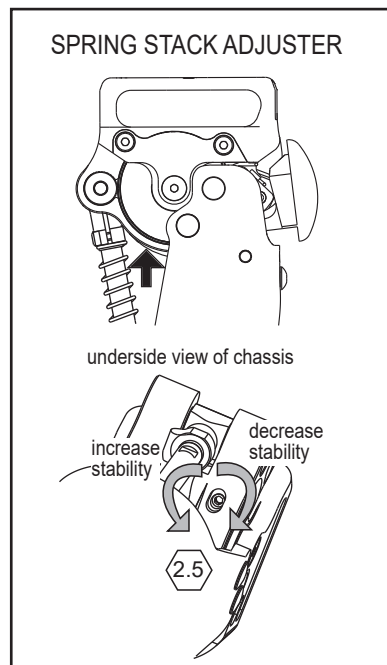
Email: sales@blatchford.co.uk, www.blatchford.co.uk

938230/2-0120



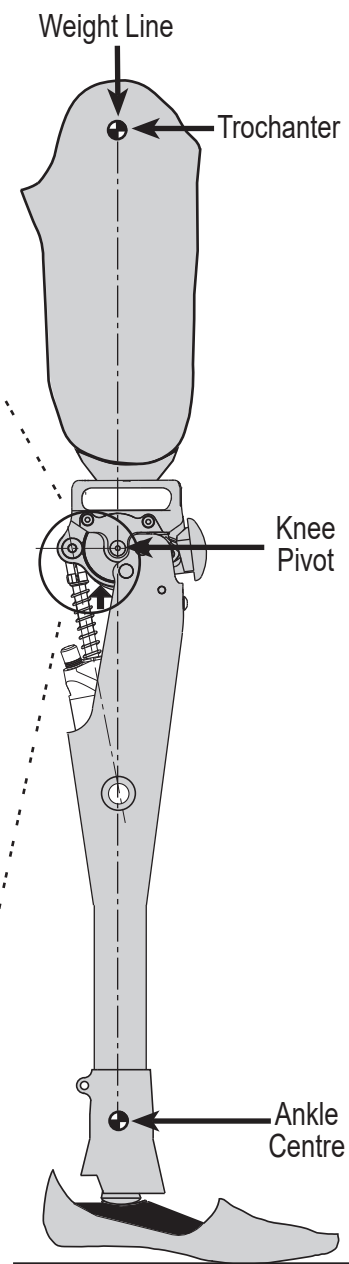
Static Alignment Guide

Walking trials



Fully extend limb to access the adjuster. Rotate the SPRING STACK ADJUSTER to achieve the required stability for the individual amputee. *Note: Audible clicks should be heard upon adjustment, and the adjuster is self locking.* Tighten the SPRING STACK to reduce stability. Release the SPRING STACK to increase stability - See above.

If required, the adjuster may be reset to the factory setting. This can be achieved by reducing stability by six audible clicks from the maximum setting.



Maintenance

To maintain optimum performance, a periodic inspection for unacceptable noise, play and stability is recommended.

The period between inspections is determined by factors such as the activity of the user, frequency of usage and the stability setting of the knee.

At these inspections:

Check condition and satisfactory operation of thigh release cable.

Dis-assemble, clean and re-assemble as shown on pages 3 & 4.

As a guide, if the setting is 6 clicks or above and the user averages 600,000 steps per annum, an annual inspection is recommended.

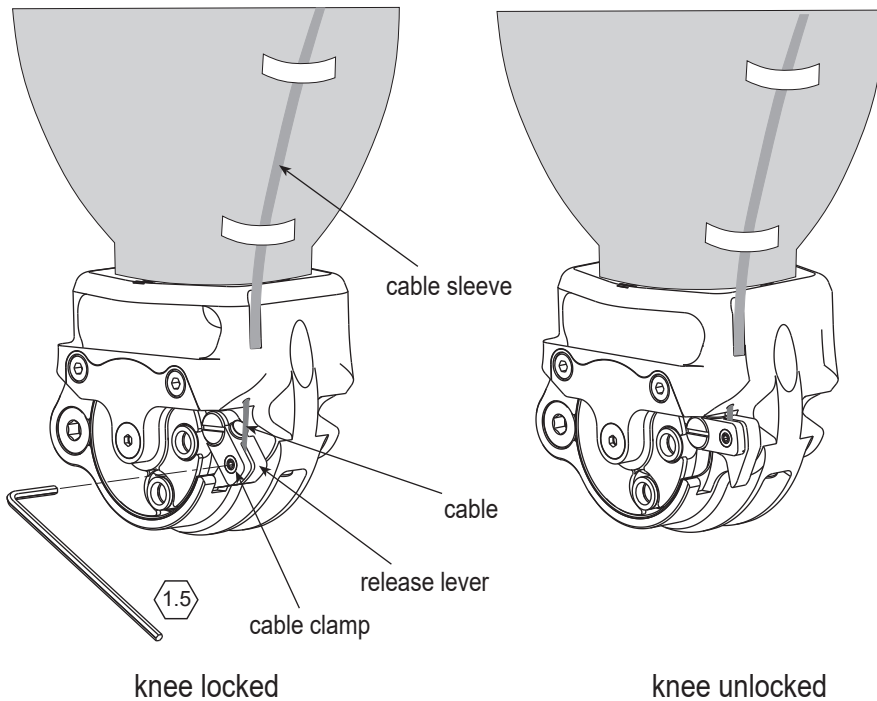
If the stability setting is less than 6 clicks and/or the user averages fewer than the average number of steps, the period inbetween inspections may be longer.

The use of a Limb Activity Monitor (LAM2) is recommended to determine step count.

Adjustment and maintenance must be carried out by competent, trained personnel. If in doubt contact Blatchford Products Limited.

Cable fitting using *Thigh Release Kit (239640)* - available separately.

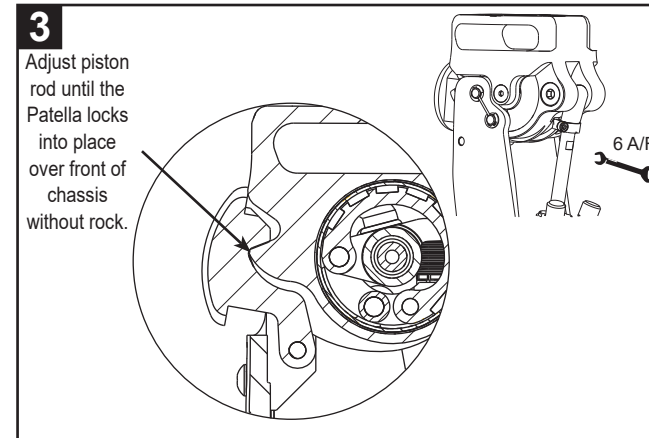
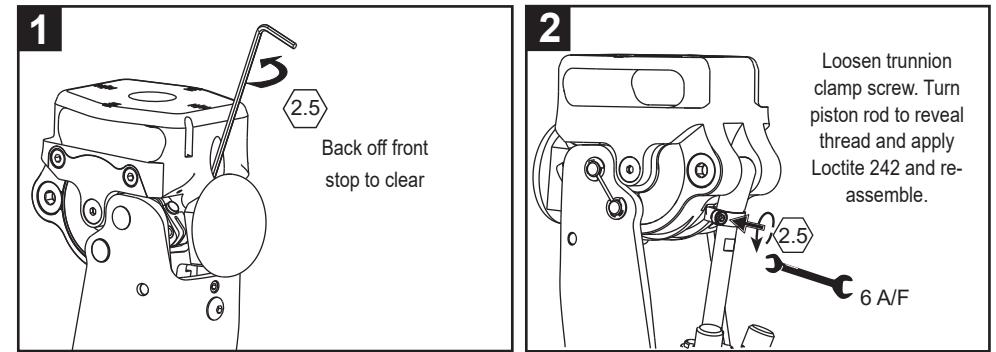
1. Lay cable against socket and locate sleeve inside counterbore in front of chassis (make allowance for changes in alignment).
2. Feed inner cable through hole in chassis.
3. Feed cable through cable clamp and secure, clamping onto tinned area at end of cable.
4. When fitting cable to thigh release, ensure release lever operates against the patella to unlock knee as required.
5. Refer to fitting instructions supplied with Thigh Release Kit.



Patella and shin components not shown for clarity.

MKL Adjustment

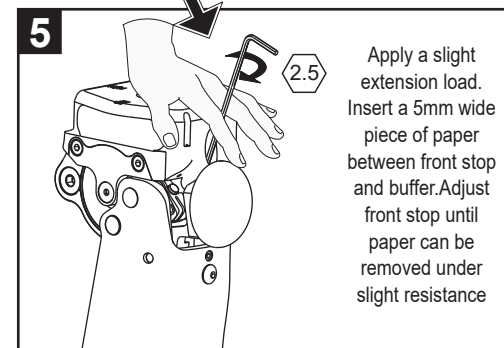
(these adjustments are carried out at the factory, however, should subsequent adjustment be required, these steps should be followed)



4

Withdraw trunnion clamp screw and apply LOCTITE 222 to thread, re-assemble and tighten.

***UNDER NO CIRCUMSTANCES MUST THE PISTON ROD WITNESS LINE BE VISIBLE BELOW THE TRUNNION.**

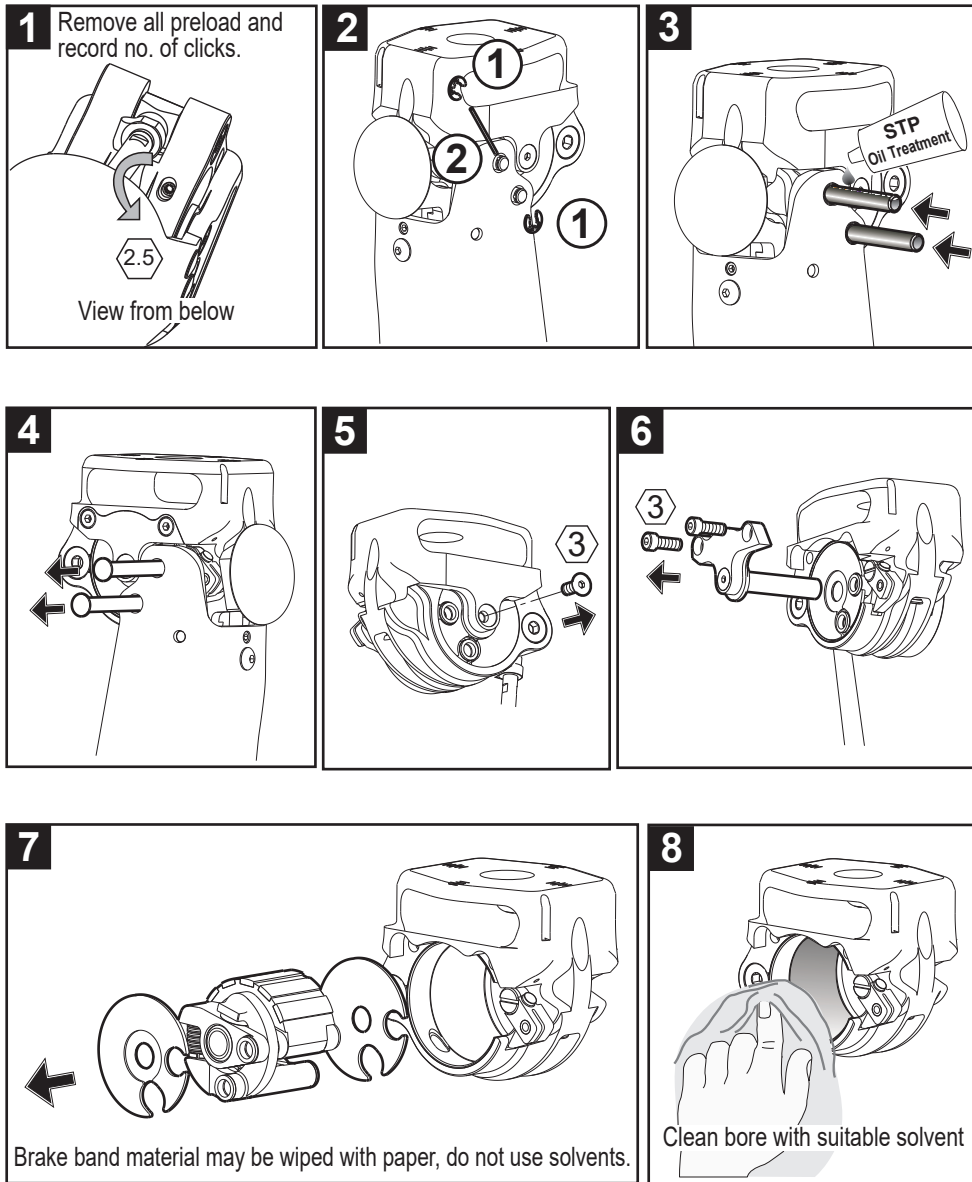


6

Any final adjustment required to alleviate rock should be by adjustment of the front stop.

Check operation of lock again, immediately prior to fitting to wearer.

Removal of the ESK+ mechanism



Replacement of ESK+ Mechanism

